

VOLUNTEER TRAINING

Clean River Kent Campaign

REFERENCE NOTES

WHO WE ARE

- A coalition of communities living along the River Kent, in Staveley, Burneside and Kendal.
- Established in Autumn 2021.

WHAT WE WANT TO DO

To keep the River Kent clean for water-based recreation and to protect ecology and wildlife.

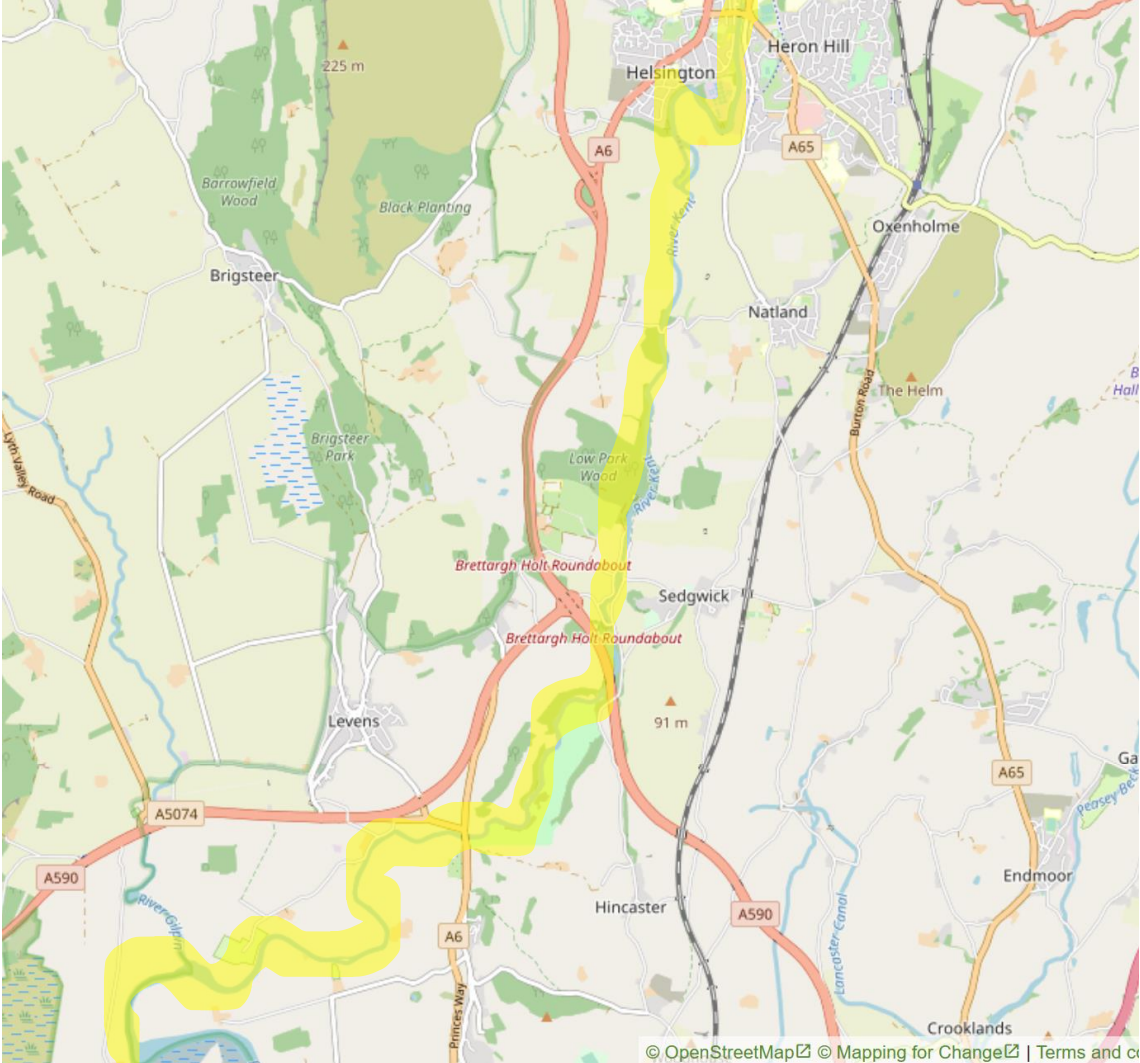
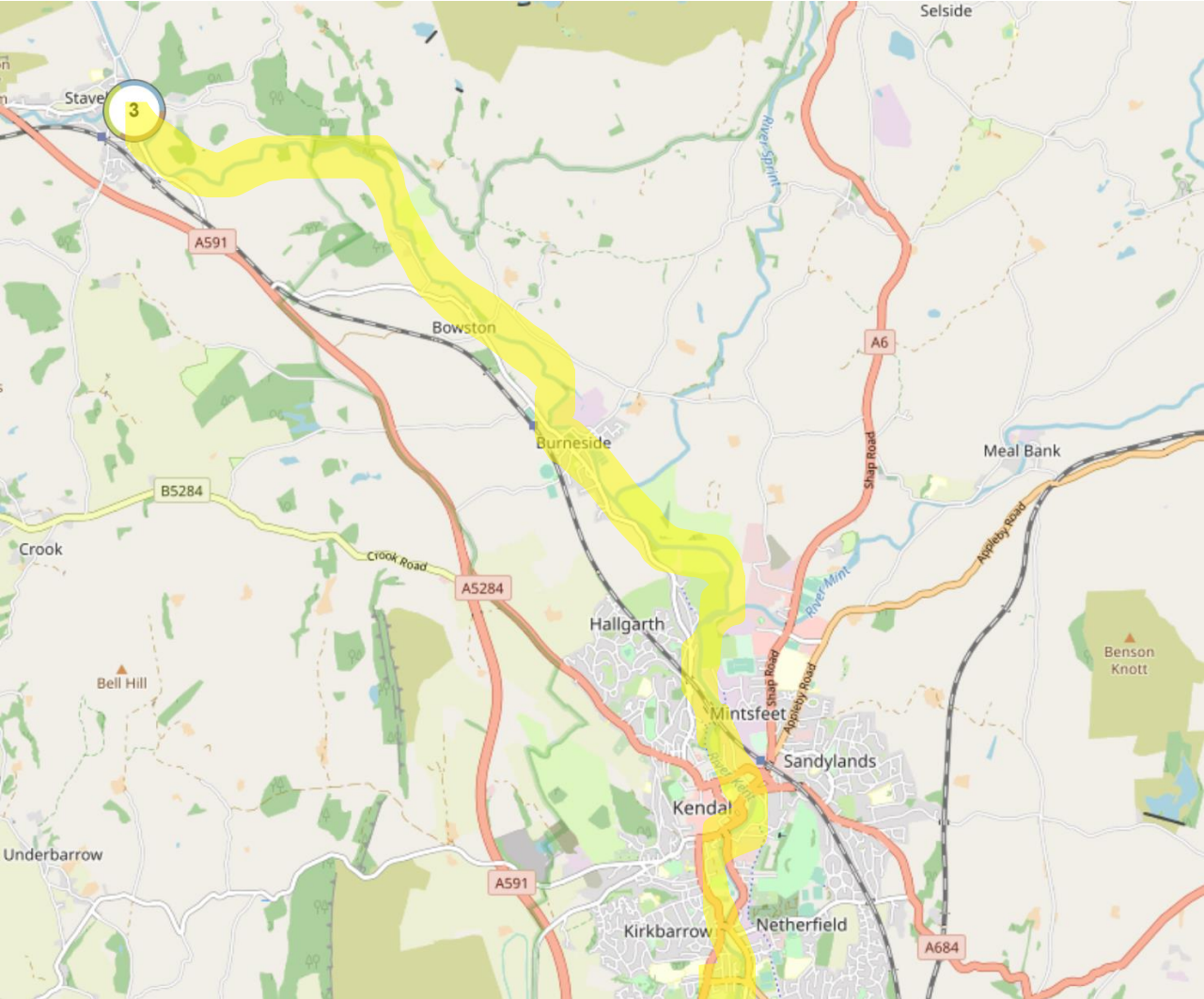


OUR OBJECTIVES

1. Reduce the amount of effluent discharged into the River Kent from a variety of sources
2. Ensure that River Kent wastewater treatment facilities meet:
 - current needs
 - the needs of new housing development
 - the additional pressures which will result from climate change
3. Work with people and organisations who use the river
4. Work with local councils, organisations and potential funders
5. Protect the ecology and wildlife of the River Kent



OVERALL PROJECT LOCATION MAP – RIVER KENT



WHAT WE'VE DONE SO FAR

- Pilot monitoring to get an idea of water quality at sites along the River Kent (results available: www.sustainablestaveley.org.uk/wp-content/uploads/2022/04/FINAL-Presentation-OPEN-EVENT.pdf)
- Produced a short, introductory film (www.sustainablestaveley.org.uk/clean-up-the-kent/)
- Worked with University of Cumbria research student
- Set up a Facebook page, web page & spoken to local media
- Engaged with stakeholders, groups and residents
- Raised funds to cover costs of further testing and data collection over the summer



WHY APPLY FOR 'BATHING WATER STATUS' FOR THE RIVER KENT (PHASE 1 & 2)



- The Environment Agency (EA) monitors ecology as well as a range of chemicals, but is not required to monitor bacteria levels in river water unless a stretch of water is designated for safe bathing status.
- If this is granted, then the EA has to regularly undertake microbiological monitoring of that stretch of river.
- The local authority needs to display signs if the water isn't safe which should enable people to use the water more safely
- Thus the application to DEFRA is a means to an end - to enable safe water based recreation and to protect wildlife.



Background

- There are only 2 other river sites with UK Bathing Water designation – the River Wharfe, Ilkley & Wolvercote Mill Stream @ Port Meadow, Oxford
- France has 573 such designated stretches of river.
- Only 14 % of rivers in the UK are designated ‘good’.
- **We want the River Kent to be the next in the country, and the first upland river location!**

WHAT WE ARE DOING NEXT WITH YOUR HELP! SUMMER PROGRAMME (May to September 2022)



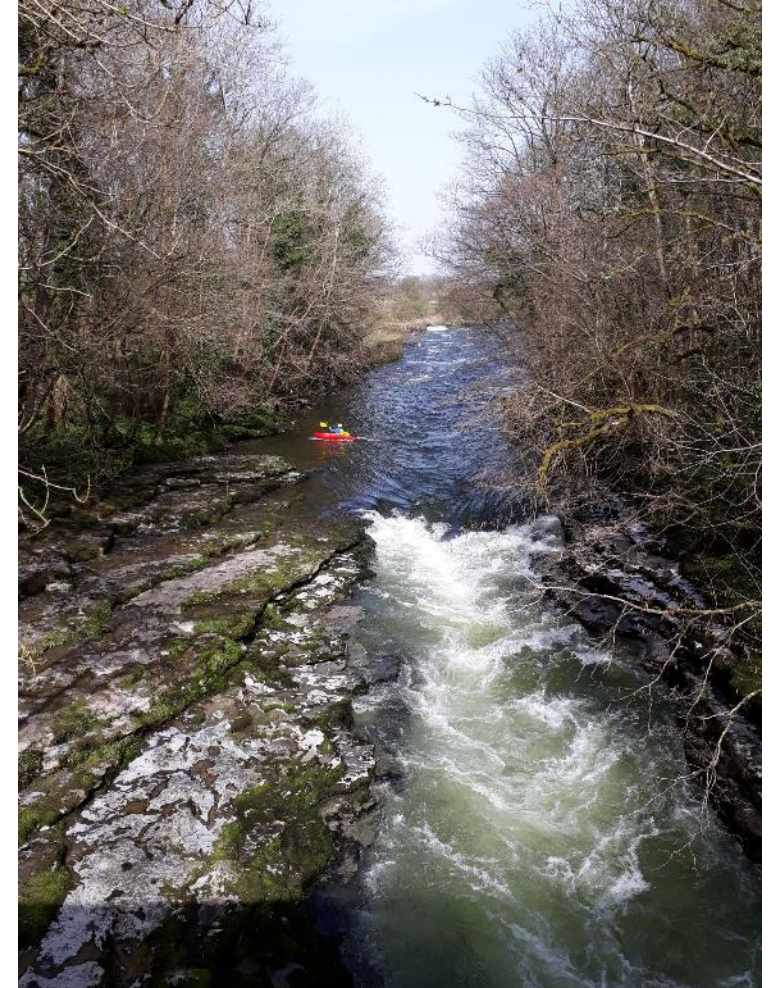
ESSENTIAL for DEFRA application for Safe Bathing Water Status
– Phase 1 (River Kent):

1. Survey usage/collect photos:

- Staveley (beach above Wilfs to Recreation Ground), ideally on sunny/busy days!

2. Carry out a questionnaire about attitudes to river:

- Staveley (beach above Wilfs to Recreation Ground), ideally on sunny/busy days!
- On-line (for wider community/stakeholders)



WHAT WE ARE DOING NEXT WITH YOUR HELP! SUMMER PROGRAMME (May to September 2022)



Additional collection to build up data, gather preliminary information about usage for DEFRA application (Phase 2) in 2023:

1. Survey usage/collect photos:

- Burneside & Sandy Bottoms (Kendal) 2 times over summer, ideally on sunny/busy days!
- Other locations along the river, dependent on volunteer capacity

2. Carry out a questionnaire about attitudes to river:

- Burneside & Sandy Bottoms (Kendal) 2 times over summer, ideally on sunny / busy days!
- Other locations along the river, dependent on volunteer capacity

3. Recruit local residents along River Kent, particularly in Staveley:

- to complete monthly diaries of their activities



WHAT WE ARE DOING NEXT WITH YOUR HELP! SUMMER PROGRAMME (May to September 2022)



Additional collection to build up data, gather preliminary information about usage for DEFRA application (Phase 2) in 2023:

Collect priority water samples:

- Staveley Recreation Ground, Burneside Millennium Green & Dockray Hall Bridge (Sandy Bottoms) x 10 times
- Beckmickle Ing Wood, Hawes Bridge and Sedgwick x 5 times

Additional water samples on the River Gowan x 3

And, if funding/resourcing permits (Crowdfunder to be launched) additional water sampling, later in summer on:

- River Sprint
- River Mint
- Above Scroggs Bridge, Staveley



A. USER COUNTS

- Survey of river user numbers during bathing season (15 May to 30th Sept) @ **Staveley** at least 10 counts in school holidays & 10 counts on weekends or Bank Holidays for DEFRA
- Surveys at other locations as volunteer capacity/interest permits
- Surveys to be undertaken during the day when there are the most people enjoying the river (eg warmest part of day 2pm, during week days after school/lunchtimes etc.)
- Aim for approx. 2 hours minimum ideally (as much as can/want)
- Counts to record the numbers of different types of users e.g. swimmers, paddlers, etc
- Adults and children to be counted separately
- Photographs to be taken as supplementary evidence (wide shots, not close ups)
- Select 1 person in group to do the counting (to avoid double counting!)

EXAMPLE OF THE COUNT CHART



CLEAN RIVER KENT CAMPAIGN - SUMMER COUNT SHEET													
Name of Person Counting:									Location: (eg Staveley, Burneside, Kendal)				
				TOTAL NUMBER OF ADULTS					TOTAL NUMBER OF CHILDREN				
		Weather Conditions	River level	Swimming	Paddling	Using the water (eg in boats)	Walking/running along river path	Using the river bank on either side	Swimming	Paddling	Using the water (eg in boats)	Walking/running along river path	Using the river bank on either side
DATE	TIME	<i>eg. Raining, sunny, cloudy</i>	<i>eg. high, medium, low</i>										

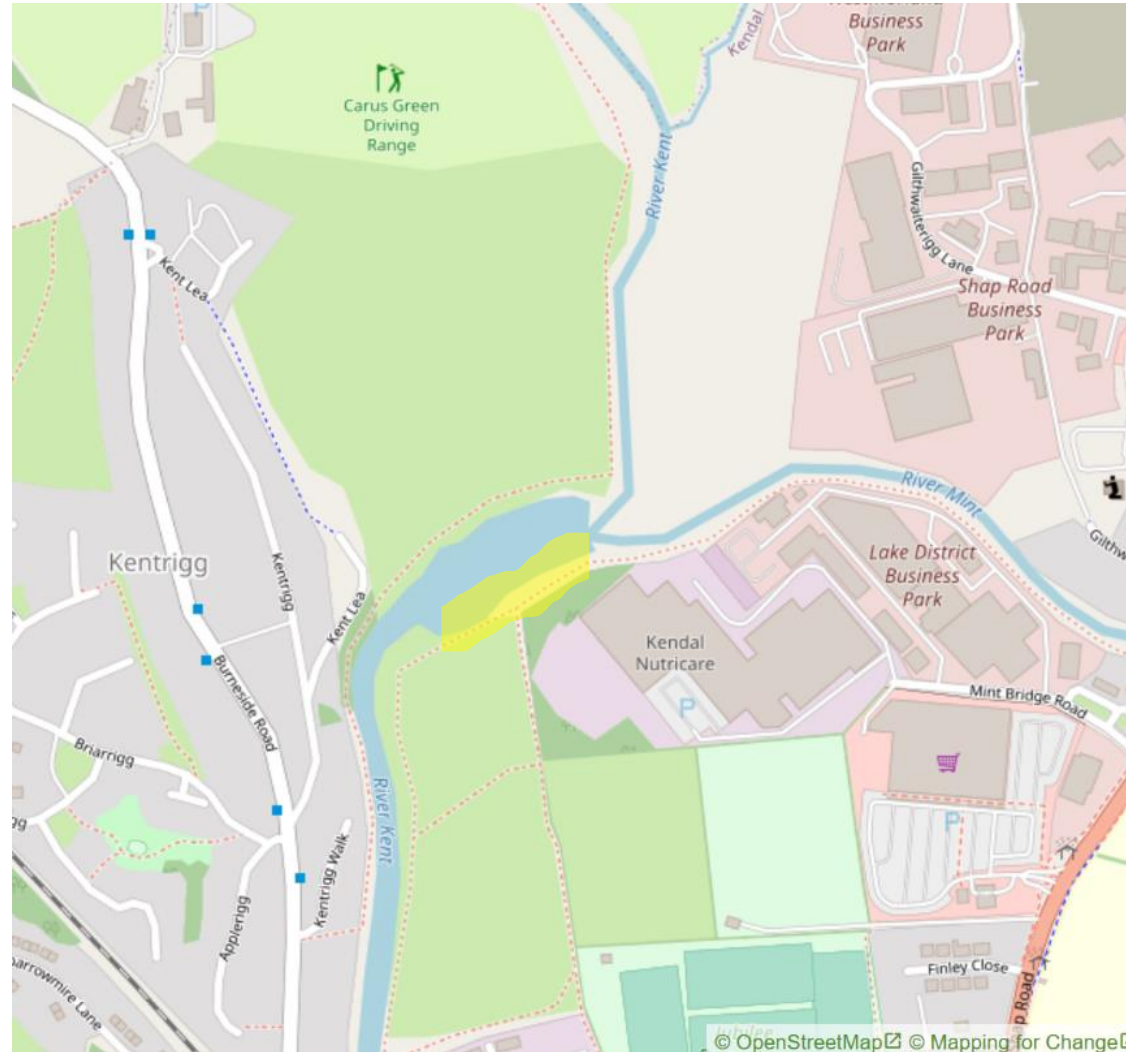
Please complete and return this form (and any other observations) at the end of the week/weekend to the nearest letter(box) (refer to volunteer guidance notes for map) or email to: senstaveley@gmail.com

COUNT LOCATIONS – FOR STAGE 1 application (2022)



Staveley (beach opposite Wilfs to corner of Rec)

COUNT LOCATIONS – PREPARATORY WORK FOR PHASE 2



Sandy Bottoms

COUNT LOCATIONS – PREPARATORY WORK FOR PHASE 2



Meander: Quite popular for swimming, people also fish downstream of there on the still water before the weir.

Sprint Bridge: Popular for swimming. Canoeists sometimes set off from here.

Millennium Green: Maybe some paddling, canoeists sometimes set off from here.

Bowston - Burneside

QUESTIONNAIRE RESULTS

- Paper copy to hand out directly to people when doing counts along river
- Online version (link on flyer to give to any one who prefers this format):

www.surveymonkey.co.uk/r/riverkent

Clean River Kent Campaign: Community Feedback Survey (Summer 2022)

Maintaining a clean River Kent for all

Thank you for showing an interest in the Clean River Kent survey.

We are an informal group of local residents from Staveley, Burneside and Kendal. We are interested in protecting the River Kent, for everyone who enjoys the river for all sorts of reasons, from fishing, to swimming, to dog-walking to kayaking. As well as protecting the unique wildlife and landscape of the River Kent.

We are gathering information from communities along the river, to help us better understand what people feel about the river, and some of the threats it currently faces. This information will be critical for an application to DEFRA to obtain bathing designation for two stretches of river - in Staveley and in Burneside.

The information you provide will be kept confidential and anonymous.

There are just 8 questions which should take about 5 minutes to complete. All completed surveys will be entered into a prize draw (optional) to win a £50 high street voucher.



Clean River Kent Campaign: SUMMER SURVEY 2022

We are an informal group of local residents from Staveley, Burneside and Kendal. We are interested in protecting the River Kent, for everyone who enjoys the river for all sorts of reasons, from fishing, to swimming, to dog-walking to kayaking. As well as protecting the unique wildlife and landscape of the River Kent.

We are gathering information from communities along the river, to help us better understand what people feel about the river, and some of the threats it currently faces. This information will be really valuable for an application to DEFRA to obtain bathing designation for various stretches of the river (Phase 1, 2022 & Phase 2, 2023).

There are just 8 questions which should take about 5 minutes to complete.

All completed surveys will be entered into a prize draw (optional) to win a £50 high street voucher.

THANK YOU!

1. How much do you support having clean water in our river fit to paddle, play & swim in?

- Strongly support
- Somewhat support
- Neither support nor oppose
- Somewhat oppose
- Strongly oppose

2. Are you.....?

- Local resident of Ings, Staveley, Kentmere, Bowston or Burneside
- Resident of Cumbria
- Visitor to Cumbria
- Local business
- Other (please specify:

3. Please select all of the ways that you/your family currently enjoy the River Kent and its immediate surrounds.

	Frequently (More than twice a week)	Regularly (at least once a month)	Irregularly (less than once a month)	Never
Picnicking / relaxing				
Walking the dog				
Walking/hiking				
Running/jogging				
Canoeing/kayaking				
Swimming				
Paddling/playing				
Birdwatching/ photography				
Angling / fishing				
To enjoy landscape/ wildlife				
Other				

If you ticked 'Other' please briefly describe:

4. How concerned are you about pollution in the River Kent?

- Very concerned
- Somewhat concerned
- Neither concerned nor unconcerned
- Relatively unconcerned
- Not concerned at all

5. Please rank how important you think the following are (1 = most important)

- Better public information about what not to put into the waste water system
- Better public information about water quality at specific sites on the river
- Better government regulation to protect our rivers from increased pollution
- Investment by United Utilities to upgrade wastewater infrastructure
- Media coverage to raise awareness about river pollution
- Practical conservation work to protect rivers

6. DEFRA safe bathing water designation provides extra protection for a site on a river, including regular water quality testing, signage indicating whether it is safe to use, plus a longer term management plan. Are you in favour of this status at the following sites?

	YES	NO	NOT SURE
Stretch of river between beach opposite <u>Wiffs</u> Café, through to the corner of the Recreation Ground, Staveley			
Stretch of river alongside Millennium Green, Burneside			
Stretch of river near <u>Dockray</u> Hall (Sandy Bottoms), Kendal			

Any further comments about your choice, or other locations that you think should be added?:

7. Are there other issues that concern you about the River Kent?

8. Please tick which apply to you below (as with all the questions, this is optional but will help us identify what groups have taken part in the survey).

- | | | |
|-----------------------------------|-----------------------------------|------------------------------------------------|
| <input type="checkbox"/> Male | <input type="checkbox"/> Female | <input type="checkbox"/> Prefer not to specify |
| <input type="checkbox"/> Under 10 | <input type="checkbox"/> Under 18 | <input type="checkbox"/> 18-24 |
| <input type="checkbox"/> 25-49 | <input type="checkbox"/> 50-64 | <input type="checkbox"/> 65+ |

That's it – you've finished!

MANY THANKS for completing our survey.

Please tick any that apply below.

- I would like to be entered into the prize draw to win a **£50 high street voucher** (closing date: 30th September 2022 midnight)
- I would like to receive the Clean River Kent Campaign newsletter
- I am interested in volunteering for the Clean River Kent Campaign

Please provide your email (**IN BLOCK CAPITALS**) if you ticked any of these boxes so we can contact you.

INDIVIDUAL DIARIES

- Available either as a paper copy for e.g. schools, families, swimming groups (and volunteers!) to complete and post back.
- Or an excel spreadsheet file to be completed and submitted to: senstaveley@gmail.com



CLEAN RIVER KENT CAMPAIGN - JUNE ACTIVITY DIARY															
Name:									Contact email/tel no:						
Please return this form at the end of the month to: Clean River Kent Campaign, 2 The Abbey Coach House, Back Lane, Staveley LA8 9LR / senstaveley@gmail.com															
If you have any photos that you are happy to share showing you/your friends/colleagues enjoying the river please email to: senstaveley@gmail.com															
	River Kent at, or near to Staveley					River Kent at, or near to Burneside					River Kent at, or near to Kendal				
	Swim	Paddle or Play	Canoe, kayak, boat	Fish	Run, jog walk, dog walk along the river	Swim	Paddle or Play	Canoe, kayak, boat	Fish	Run, jog walk, dog walk along the river	Swim	Paddle or Play	Canoe, kayak, boat	Fish	Run, jog walk, dog walk along the river
Weds June 1															
Thurs June 2															
Fri June 3															
Sat June 4															
Sun June 5															
Mon June 6															
Tues June 7															
Weds June 8															

VOLUNTEER TASKS – COUNTS / QUESTIONNAIRES/DIARIES



- Each volunteer selects ideally 1+ weeks over the summer
- Volunteers to work in pairs / groups as preferred
- For Staveley, undertake counts on at least the key days during that week(s) based on the **Programme Calendar** to ensure we collect data from the right number of weekends, Bank holidays, school times for this year's DEFRA submission
- Take photographs as evidence of use (and for publicity purposes)
- Talk to users / invite them to complete hard copy questionnaires or take a flyer and complete online; and/or encourage to complete a monthly diary

AT THE END OF THE DAY / WEEK:



- Submit completed hard copy count sheets, questionnaires or diaries:
 - **Staveley** - through the letterbox at 2 The Abbey Coach House, Back Lane, Staveley LA8 9LR
 - **Burneside** - in the box that will be located @ E & JG Seward, 6 Steeles Row, Burneside, Kendal LA9 6PY
 - **Sandy Bottoms** - in the box on the doorstep @ 5 Aikrigg Ave, Kendal, LA9 6DY
- Send any e-copies and photographs to: senstaveley@gmail.com (please include **Clean River Kent Campaign data** in the email title)



LETTER(BOX) LOCATIONS!



Staveley



Burneside



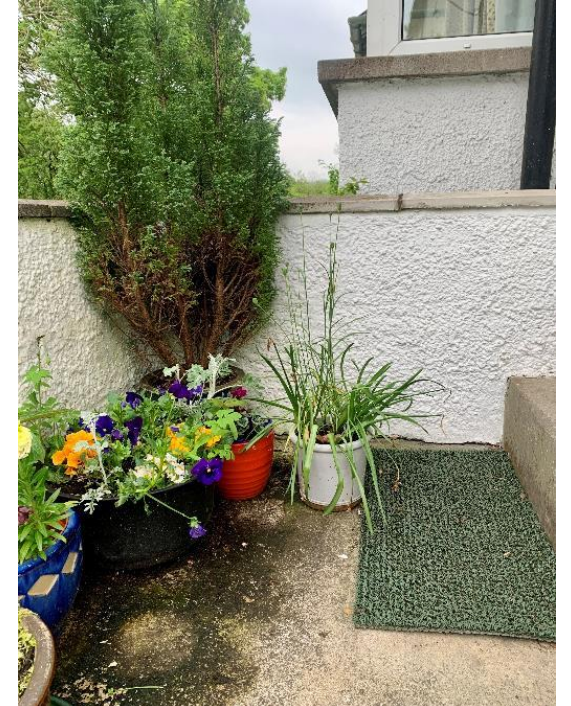
LETTER(BOX) LOCATIONS!



CLEAN RIVER
KENT



There will be a box on the door step (right pix below) for completed forms. The door doesn't have a number but the numbers are consecutive with 1 being first house off Burneside Rd.



Kendal

COLLECTING WATER QUALITY SAMPLES

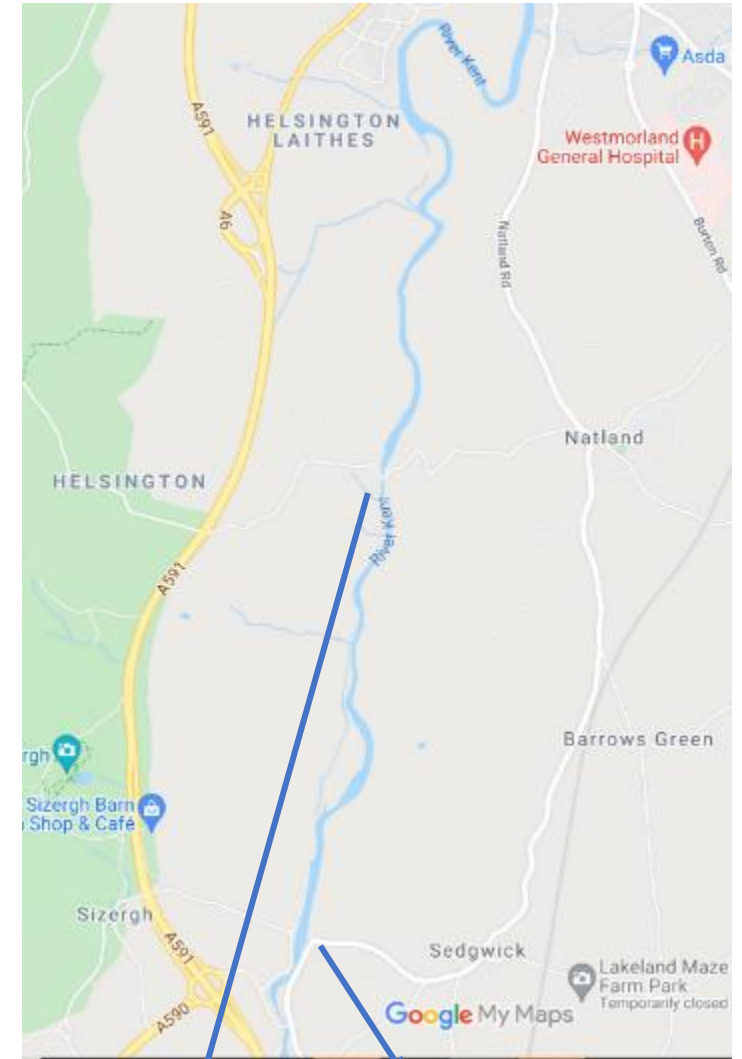
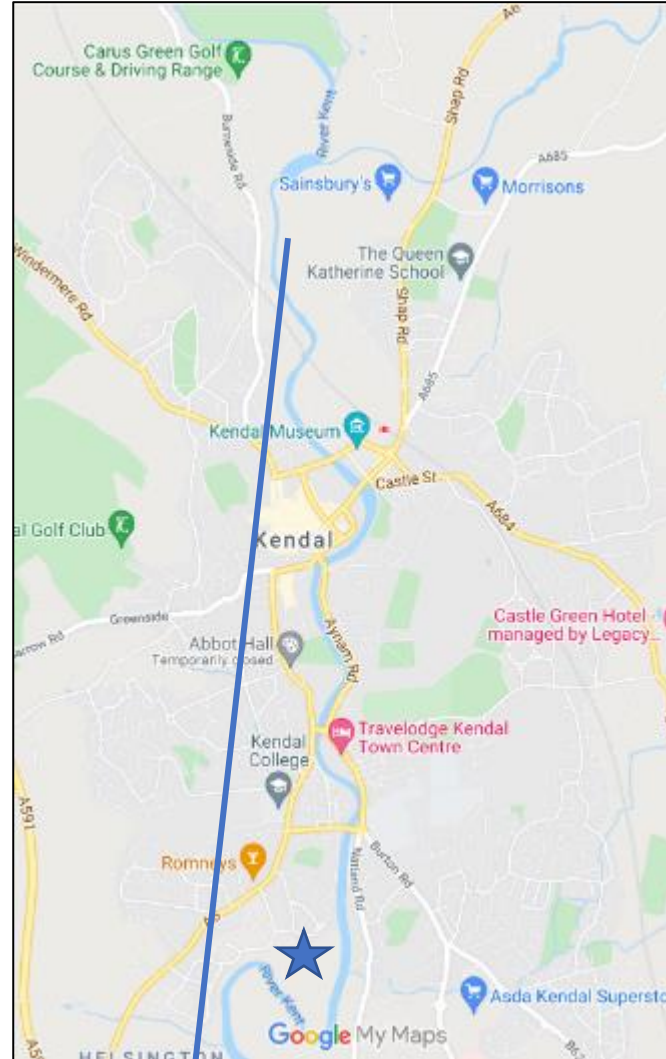
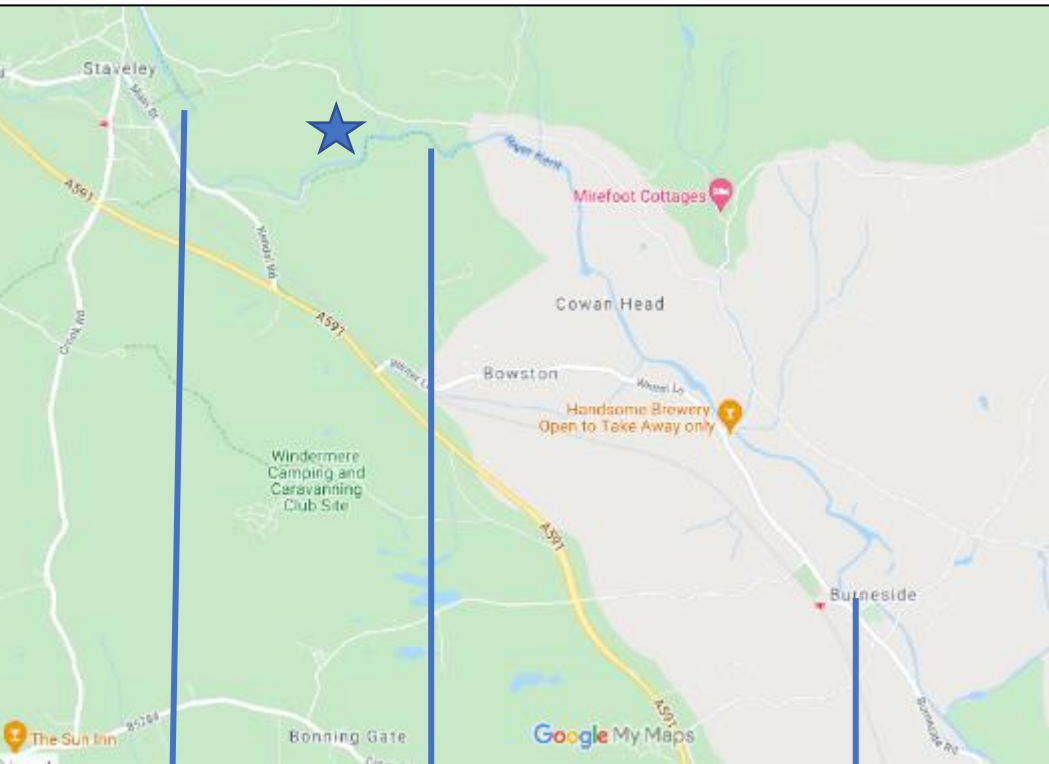
This is *not an essential requirement* for the DEFRA application but we think it is really important to continue to collect evidence about the status of the river, and to gather more evidence about other stretches of the River Kent that we want to submit for bathing status in Phase 2 (2023), and general campaigning.

Collections over the summer:

- Staveley Recreation Ground – 10
- Burneside Millennium Green – 10
- Sandy Bottoms, Kendal - 10
- Beckmickle Ing Wood – 5
- Hawes Bridge – 5
- Sedgwick – 5
- River Gowan – 3
- **Sprint, Mint, Scroggs Bridge tbc**



WATER QUALITY MONITORING SITES



SITE 1
Staveley
Recreation
Ground

Site 2
Beckmickle
Ing Woods

SITE 3
Burneside
Millennium
Green

Site 4 Dockray Hall
Bridge, Kendal

SITE 5 Hawes
Bridge, Natland

Site 6
Sedgwick

★ = Wastewater Treatment Works

COLLECTING WATER QUALITY SAMPLES – LOCATIONS



1. **Staveley Recreation Ground** 54 22 34 7 N / 2 48 45 5 W
2. **Beckmickle Ing Wood** 54 22 27 0 N / 2 47 36 4 W
3. **Burneside - Millennium Green** 54 35 44 0 N / 2 76 11 5 W
4. **Dockray Hall Bridge, Kendal** 54 34 22 4 N / 2 74 55 3 W
5. **Hawes Bridge** 54 29 6 16 N / 2 74 92 4 W
6. **Sedgwick** 54 28 23 5 N / 2 75 61 3 W

COLLECTING WATER QUALITY SAMPLES – THE TASK



- We collect the samples in small bottles provided by the lab, pre-labelled with location and date, time to be added when samples collected.
- We can either:
 - Collect the sample from the bank using a sampling bottle on a rope – hold on to end of rope, but don't wrap round hand in case the bottle gets caught
 - Drop the bottle from downstream parapet of bridge.
- Fill labelled sample bottle to neck, screw lid tight, and add time to label.
- Take a photo of person taking the sample (make sure camera shows date if possible).
- We also record the same details on a paper log plus weather conditions.
- We will also record the depth of the river and recent rainfall so that we have a comprehensive picture.
- The samples then need to be delivered, with a "Chain of Custody" form to the lab and be plated out within 24 hours.

COLLECTING WATER QUALITY SAMPLES – THE KIT



- A sampling bottle to collect samples from the river – this is encased in a bike bottle holder using duct tape, with an attached lead weight, and around 8m climbing rope – the water is then decanted into the pre-labelled bottle for the lab
- A cool bag for the samples
- Two ice blocks
- Two ice bags
- Water flagon of tap water to rinse collection bottle/rope/weight after each sample is collected
- A pair of scissors or a knife
- Hand sanitiser
- Basic First Aid kit
- A CRKC t-shirt / lanyard to identify us as volunteers
- Spare copies of fliers / surveys to hand out, if appropriate

COLLECTING WATER QUALITY SAMPLES – LOGISTICS



- There is a critical window of time to get the water samples to the laboratory (drop off in Preston!) before the bacteria starts to die. Hence the storage in ice, cold box etc.
- Therefore timings are important.....
- One 'team' starts in Staveley (meet outside Pavilion) at 2pm, the other 'team' starts in Kendal (Dockray Hall Bridge) at 2pm
- Each team needs a designated driver. The Staveley team then drive to Beck Mickle Ing Woods to collect sample, and then to Burneside to collect another sample. The Kendal team collect at Dockray Hall Bridge, and then drive to Hawes Bridge and Sedgwick to collect samples.
- The teams rendezvous at Sizergh Farm Shop car park about 3.30pm to hand over samples to driver to Preston (needs to deliver samples for collection by courier before 5pm)

SUMMARY OF POTENTIAL VOLUNTEER TASKS



- Complete counts (and take photos) of usage
- Distribute hard copies, and promote online questionnaire
- Complete personal (and promote) daily diary entries
- Join water sampling team to assist with water sample collection
- Take general photos of river for marketing/publicity purposes

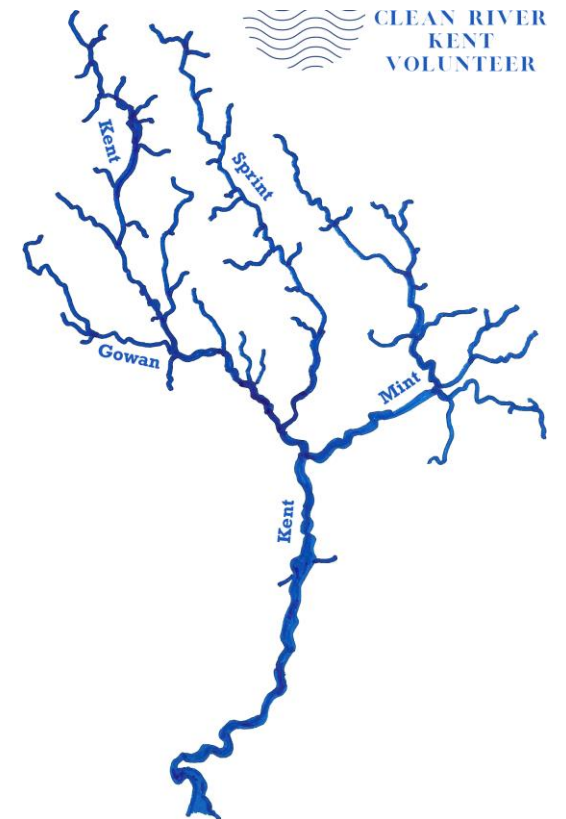
SUMMARY OF POTENTIAL VOLUNTEER TASKS

- Please refer to the Summer Calendar for dates / task allocation
- This should have been sent to you as a PDF document.
- Also available for download on SENS website page:
www.sustainablestaveley.org.uk/summer2022/
- Scroll down to Volunteer Document section at end of page!

VOLUNTEER KIT



1. Branded T-shirt to identify you as a volunteer for Clean River Kent Campaign
2. Lanyard with your name
3. Quantity of A5 flyers about the project to hand out if people want more information / want to complete the questionnaire online
4. Samples of:
 - Questionnaire
 - Count sheet
 - Monthly diary
 - Photo disclaimer
5. Volunteer instructions (ie this presentation)
6. FAQs



CLEAN RIVER KENT CAMPAIGN (CRKC)



CLEAN RIVER KENT



CLEAN RIVER KENT

WHO ARE WE?

A coalition of volunteers from communities along the River Kent in Staveley, Burnside and Kendal. We were established in Autumn 2021.

WHAT DO WE WANT TO DO?

1. Clean up the River Kent for water-based recreation and to protect ecology and wildlife.
2. Reduce the amount of effluent discharged into the River Kent from a variety of sources.
3. Work in partnership with local groups and organisations.

To visit our web site
scan the QR code



WHAT WE ARE DOING?

1. Counting the numbers of people using the river for any sort of leisure-based recreation.
2. Gathering information about what people feel about the River Kent.
3. Working with local people (citizen scientists) to monitor the water quality of the river.

WHY ARE WE COLLECTING THIS DATA?

To secure 'safe bathing' designation for a stretch of the River Kent. This gives the river extra protection from the Environment Agency. If we are successful the River Kent would just one of 3 rivers in the whole of England to get this designation!

HOW CAN YOU GET INVOLVED?

- Follow us (Facebook): @cleanriverkent
- Join us – email: senstaveley@gmail.com (ask to be added to CRKC mailing list and/or become a volunteer)
- Complete our questionnaire or survey: www.surveymonkey.co.uk/r/riverkent (£50 voucher prize draw!)
- Tell others about us!

sustainablestaveley.org.uk/clean-up-the-kent/

VOLUNTEER WEBPAGE

- For reference, to download / copy - all the paperwork is available at:

www.sustainablestaveley.org.uk/summer2022

- Available both as:
 - Excel documents (to input data directly)
 - Word documents (for hard copy versions)

EXISTING VOLUNTEERS

Please download and use/distribute the following documents, as required.

Where relevant both Word/PDF and Excel versions have been provided for either hard copy or e-copy usage.

If you have any questions/suggestions please email: senstaveley@gmail.com

[Clean River Kent Questionnaire \(PDF doc\)](#)

[Click here to go direct to the online survey](#)

[User count chart](#) (Word doc)

[User count chart](#) (Excel doc)

[Daily diary of usage](#) (Word doc)

[Daily diary of usage](#) (Excel doc)

[Photo permission form](#) (PDF doc)

VOLUNTEER REFERENCE DOCUMENTS

Briefing notes (PDF doc) STILL TO BE ADDED

[FAQs](#) (PDF doc)

[Risk assessment](#) (PDF doc)

[Volunteer Consent Form](#) (PDF doc)

[River sampling instructions](#) (PDF)

[A5 flyers](#) – general background about the project / information about the Clean River Kent questionnaire (PDF doc)

HEALTH AND SAFETY – THINGS TO DISCUSS



- Work in pairs preferably
- Complete the volunteer consent form (& remind us if you have any conditions we should be aware of)
- Note: If hot day, wear sun cream, hat, carry water.
- What to do with aggressive or non-engaging people (stay polite, detach asap)
- Photographs and consents: no close up faces, lots of general shots of activities, other shots for marketing/publicity (consent forms are essential if want to photograph individuals that can be recognised – available on website)
- Risk assessment – read through (copy available on website)

CHECK LIST FOR TODAY



1. Everyone ok to share emails with each other? (we will create a contact sheet and circulate to help communication)
2. Everyone completed and returned their volunteer disclaimer form?
3. Collected lanyard, flyers, other paperwork as necessary?
4. Any questions about next steps?
5. **PLEASE SIGN UP FOR SESSIONS YOU CAN MAKE BEFORE YOU LEAVE** (refer to calendar handout)

CONTACT DETAILS

Email: senstaveley@gmail.com

Facebook: @cleanriverkent

Emergency phone numbers:

Isobel: 07952 786621

Sheila: 07957915211



Kendal
Town Council



Burneside
Community
Energy

Burneside
PARISH COUNCIL

STAVELEY WITH INGS PARISH COUNCIL



Lake
District
Foundation
visit.give.protect

