



STAVELEY ACTION FOR NATURE

SENS

Sustainability & Energy
Network in Staveley



A checklist for wildlife-friendly gardens

You don't have to join – just join in

How wildlife friendly is your garden?

How many boxes can you tick?

- Nectar-rich flowers from spring to autumn (look for the RHS Perfect for pollinators logo on plants and seed packets).
- Seed heads and berries left through the winter.
- Dead wood, log pile, stone pile, dead leaves.
- Fruit trees, berry-bearing shrubs, climbing plants on wall, fence or trellis (eg ivy, honeysuckle, clematis) to provide food, shelter and nesting sites.
- Some lawn left to grow long for wild flowers.
- A way for hedgehogs to move in and out of your garden.
- Wildlife pond or sunk container, however small.
- A bird bath.
- Compost heap, compost bin or wormery.
- Rainwater butt.
- Compost which is peat-free.
- A chemical-free garden ie no pesticides, weed killer or non-organic slug pellets.



English bluebell
– *Hyacinthoides non-scripta*

Grape hyacinth
– *Muscari armeniacum*

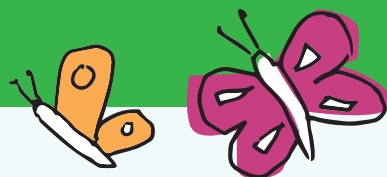
Buddleia
– *Buddleja davidii*

Lavender
– *Lavandula angustifolia*

Honeysuckle
– *Lonicera periclymenum*

Common sunflower
– *Helianthus annuus*

More Ways To Help Wildlife



1. **Make your own butterfly feeder**
www.welshwildlife.org/things-to-do/activity-sheets-how-to-build-a/
2. **Build your own pond**
www.wildlifetrusts.org/actions/how-build-pond
3. **How to make a new build garden for wildlife**
www.wildlifetrusts.org/actions/how-make-new-build-garden-wildlife
4. **Make your own compost**
www.bbc.co.uk/gardening/htbg/module7/making_your_own_compost1.shtml



How to make a butterfly feeder

What you need:



1. Draw a flower on your card and colour it in with bright colours, then cut it out
2. Stick a plastic bottle top in the centre
3. Use sellotape to stick the straw or cane onto the back of the flower, and stand it in the pot of soil
4. Mix the sugar with some water and soak the cotton wool in the solution
5. Put cotton wool inside bottle top



FURTHER INFORMATION/ADVICE

Check out the following websites for lots of expert advice and suggestions:

- Cumbria Wildlife Trust
- Butterfly Conservation UK
- Royal Horticultural Society (RHS)
- Royal Society for the Protection of Birds (RSPB)
- The Woodland Trust
- The National Trust

GET INVOLVED

SENS would like to set up a working group to explore how we can help protect Staveley's biodiversity. If you are interested in finding out more do get in touch!

Email: senstaveley@gmail.com

PLEASE CAN YOU HELP

We are inviting you to contribute to an active travel plan for Staveley. What are your priorities? What would you like to change?

The first phase is a short survey - here is the link - <https://tinyurl.com/y82543uc>
Or if you prefer pen and paper - a copy of the survey is enclosed with this leaflet.

Please return by 21st August.
Thank you very much for your help!

